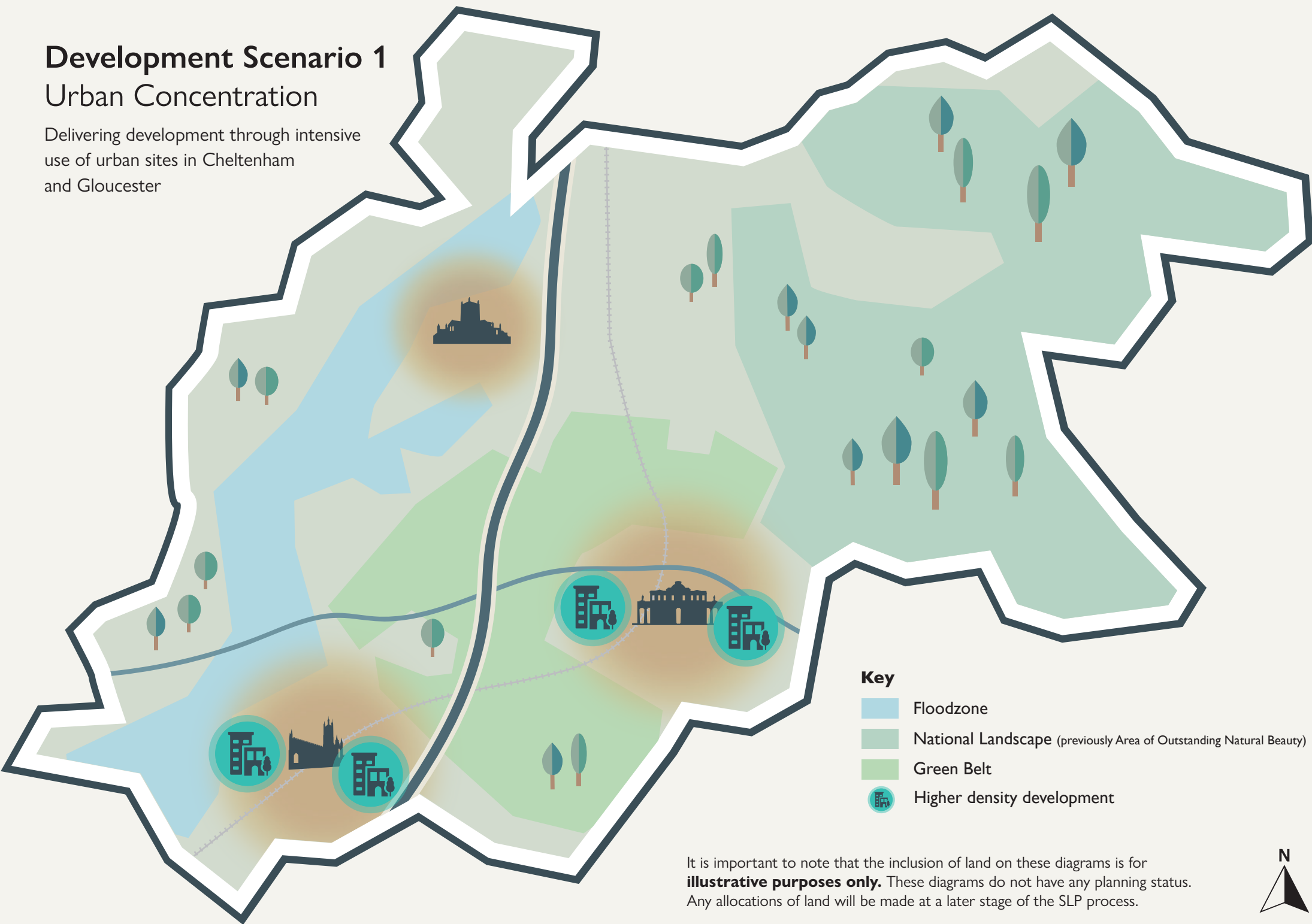


Development Scenario 1

Urban Concentration

Delivering development through intensive use of urban sites in Cheltenham and Gloucester



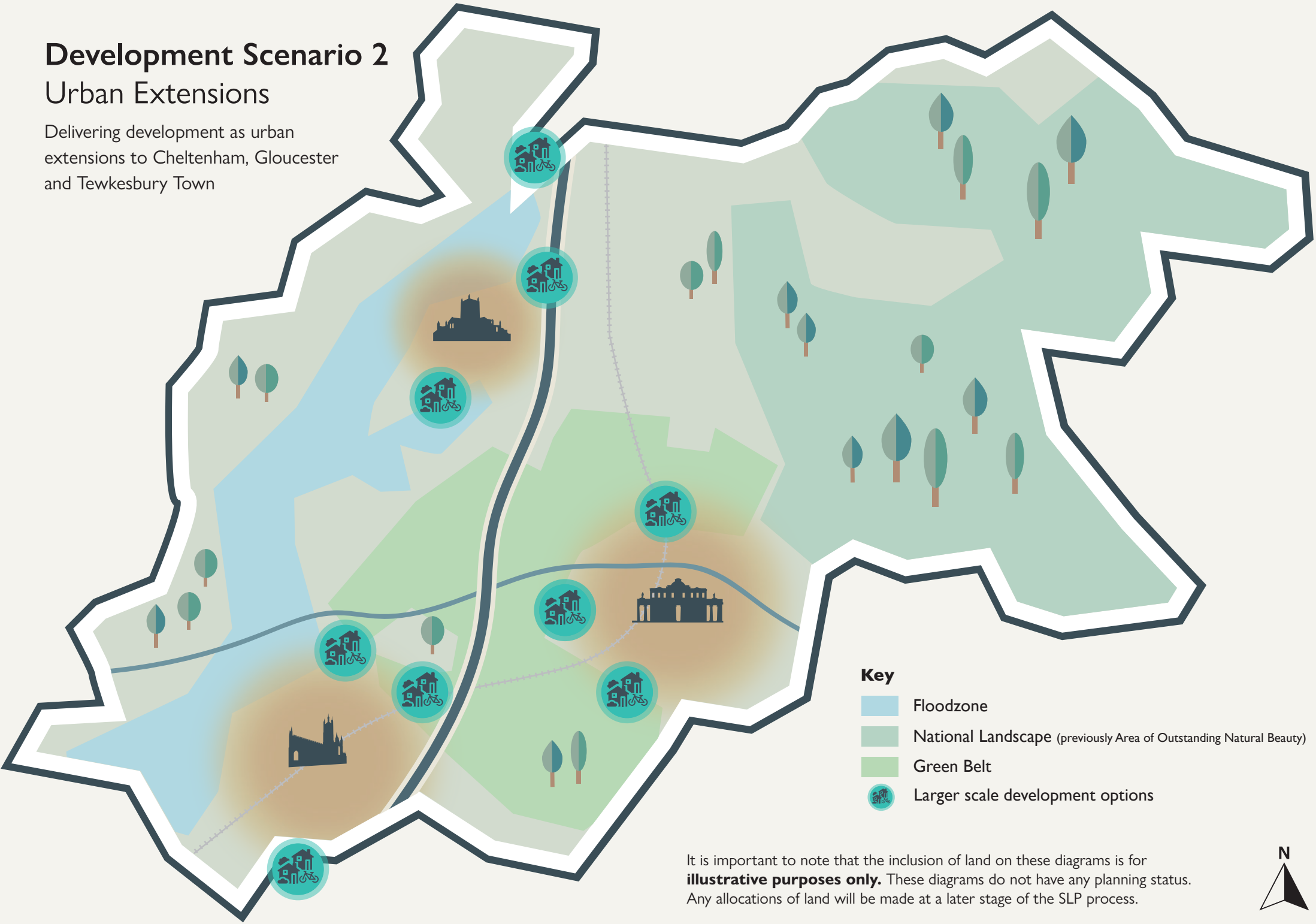
It is important to note that the inclusion of land on these diagrams is for **illustrative purposes only**. These diagrams do not have any planning status. Any allocations of land will be made at a later stage of the SLP process.



Development Scenario 2

Urban Extensions

Delivering development as urban extensions to Cheltenham, Gloucester and Tewkesbury Town



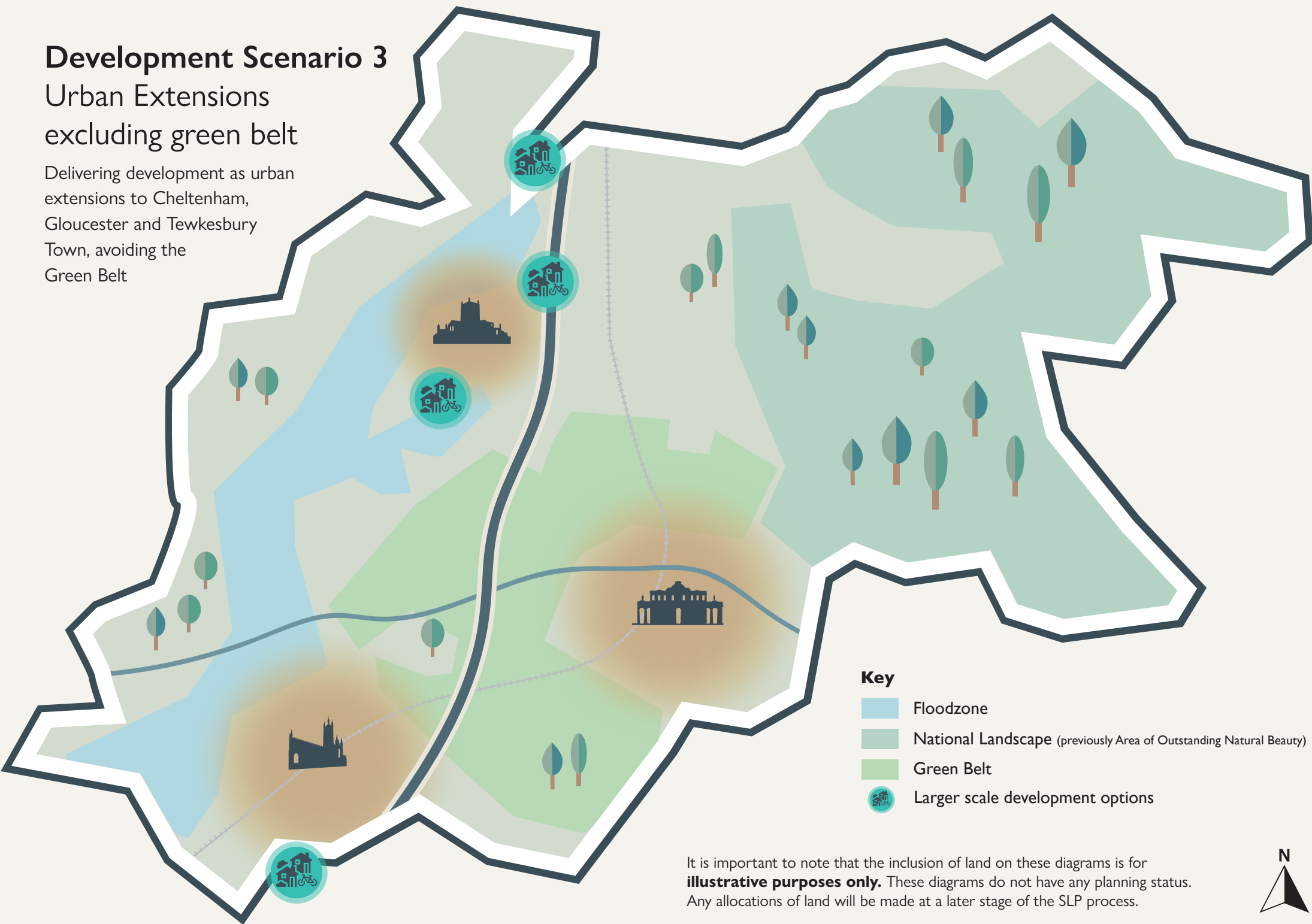
It is important to note that the inclusion of land on these diagrams is for **illustrative purposes only**. These diagrams do not have any planning status. Any allocations of land will be made at a later stage of the SLP process.



Development Scenario 3

Urban Extensions excluding green belt

Delivering development as urban extensions to Cheltenham, Gloucester and Tewkesbury Town, avoiding the Green Belt



- Key**
- Floodzone
 - National Landscape (previously Area of Outstanding Natural Beauty)
 - Green Belt
 - Larger scale development options

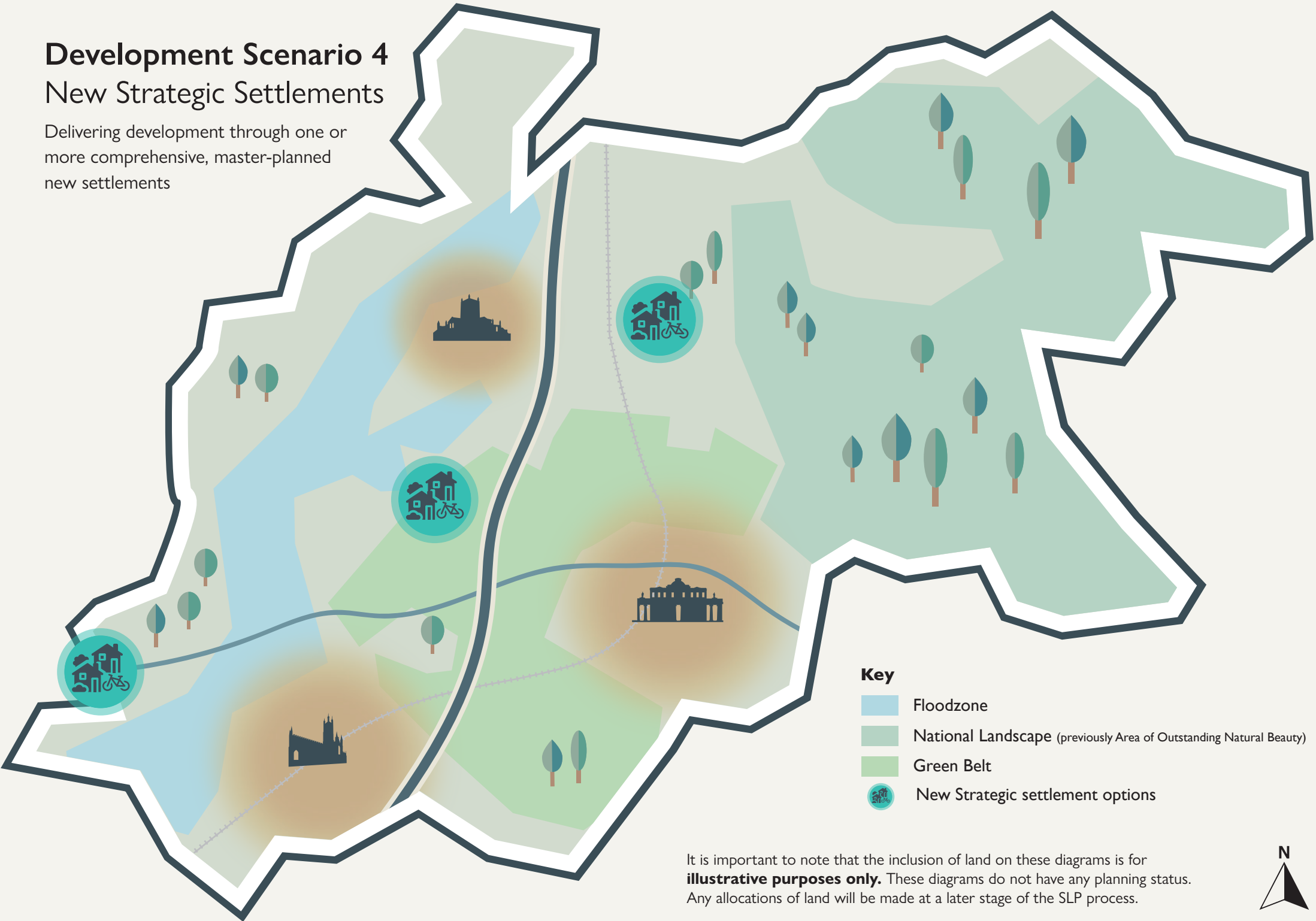
It is important to note that the inclusion of land on these diagrams is for **illustrative purposes only**. These diagrams do not have any planning status. Any allocations of land will be made at a later stage of the SLP process.



Development Scenario 4

New Strategic Settlements

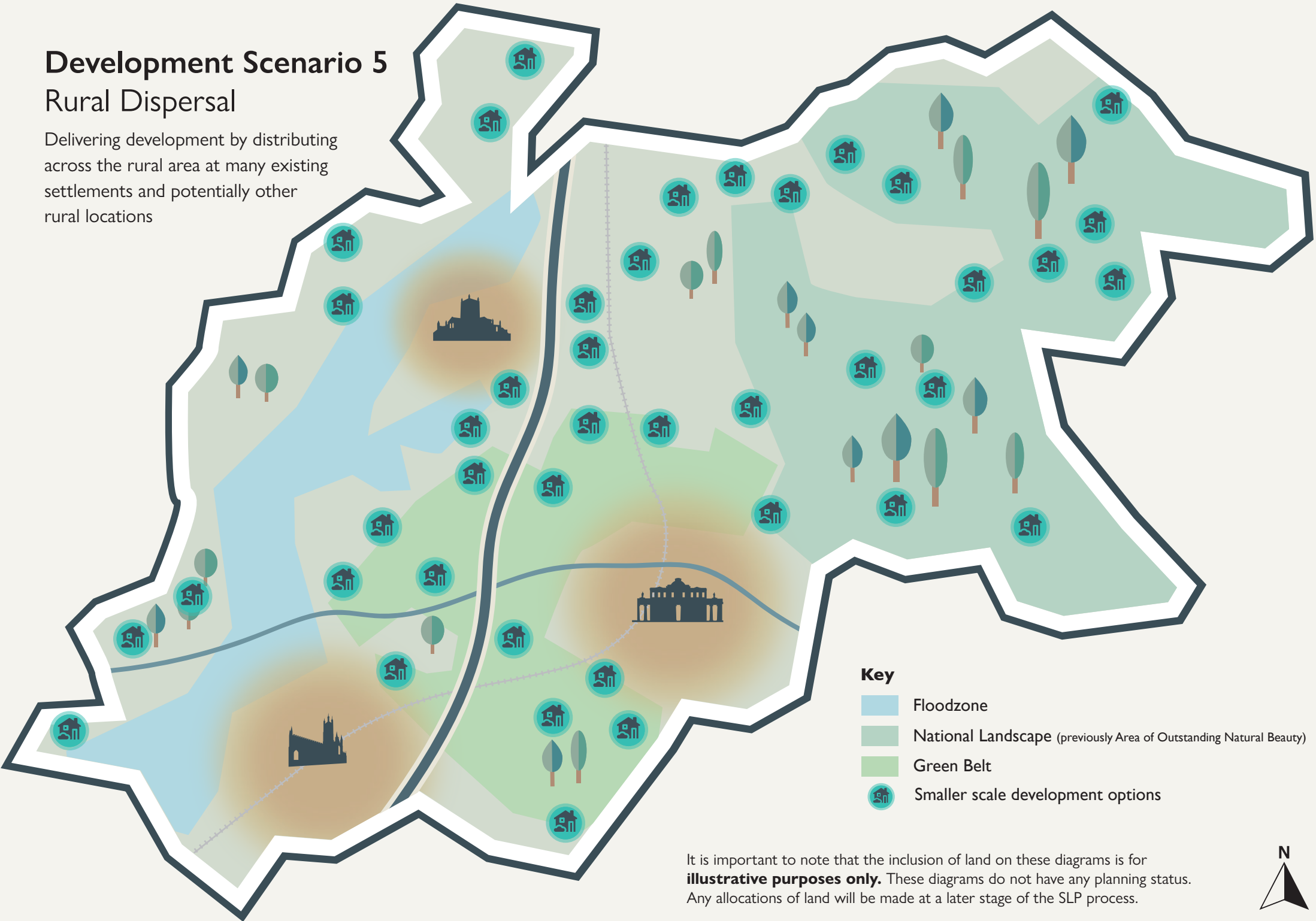
Delivering development through one or more comprehensive, master-planned new settlements



Development Scenario 5

Rural Dispersal

Delivering development by distributing across the rural area at many existing settlements and potentially other rural locations



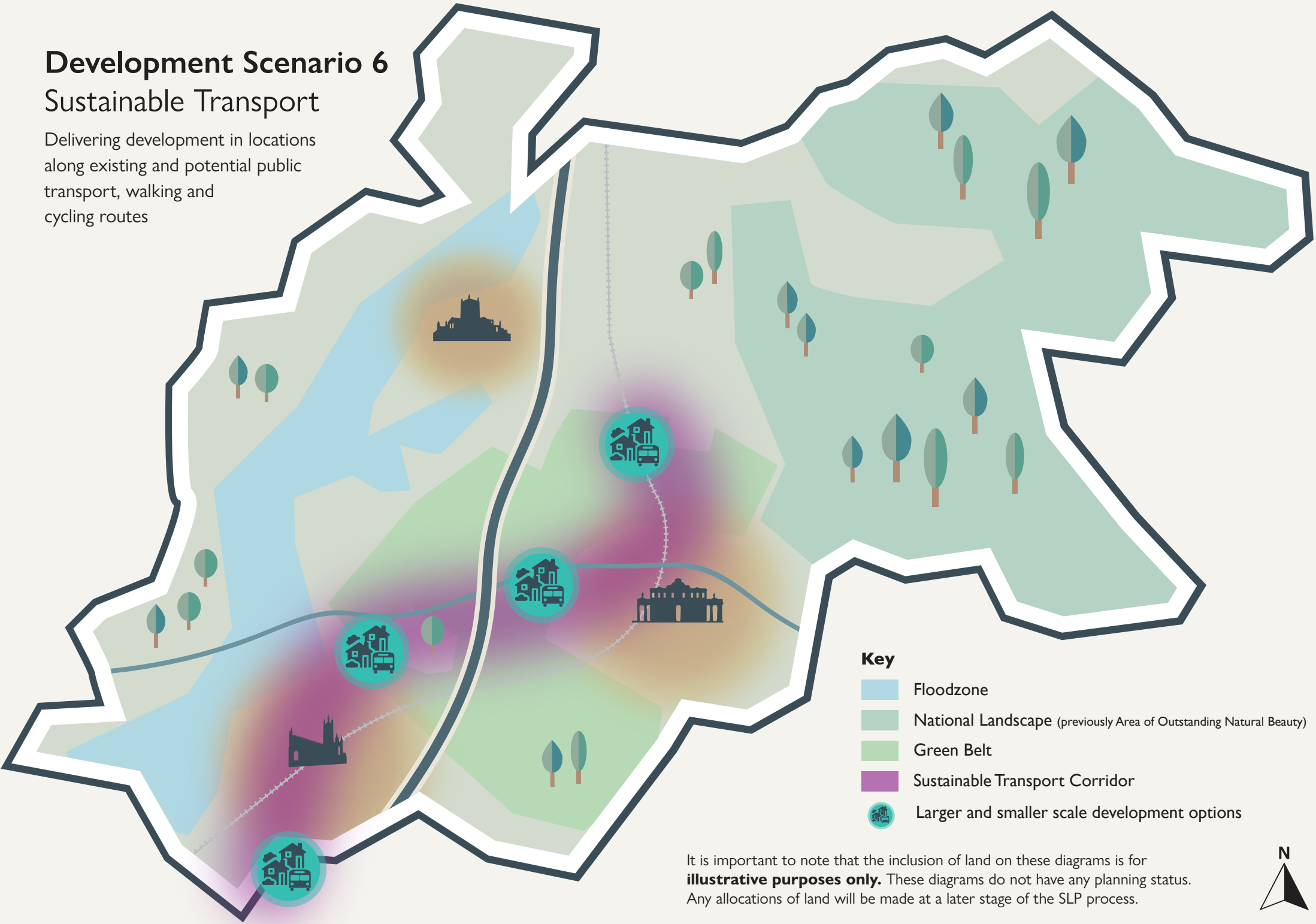
It is important to note that the inclusion of land on these diagrams is for **illustrative purposes only**. These diagrams do not have any planning status. Any allocations of land will be made at a later stage of the SLP process.



Development Scenario 6

Sustainable Transport

Delivering development in locations along existing and potential public transport, walking and cycling routes



It is important to note that the inclusion of land on these diagrams is for **illustrative purposes only**. These diagrams do not have any planning status. Any allocations of land will be made at a later stage of the SLP process.

