



BETTER CONNECTED • BETTER INFORMED

C2S NEWS

BUSINESS SHOWCASE EXHIBITION & LUNCH 2019



PROUD TO BE WORKING WITH THE SOUTH WEST
AND WORCESTERSHIRE'S LEADING BUSINESSES

BRISTOL & BATH | GLOUCESTERSHIRE | SWINDON & WILTSHIRE | WORCESTERSHIRE

C2S Annual Business Showcase Exhibition and Lunch

Thank you to everyone that attended the Business Showcase Exhibition at the award winning Stanbrook Abbey, Worcestershire.

This event was designed to support the business community and growth across all regions, an opportunity for organisations to showcase their products and services, make new contacts and develop new opportunities.

The exhibition was a complete sell out with every stand space taken, showcasing a diverse group of organisations, from Innovation, Technology, Cyber, Education and the Service Industry to Hospitality, Design, HR, Food & Drink, creating an interesting and enjoyable event. Thank you to all exhibitors who took part, our event sponsors on the day **ISO Quality Services Ltd** and for all that supported this event. Exhibitors were delighted with the quality of the attendees and the opportunities on the day.

Checkout the photos from the C2S photo gallery www.circle2success.com/photo-gallery/?album=25011



"We are delighted to be sponsoring this event and to be part of this vibrant business community, Worcestershire is and we are looking forward to continued growth over the next 12 months."

Jennifer Semini, Managing Director ISO Quality Services Ltd



The C2S Team

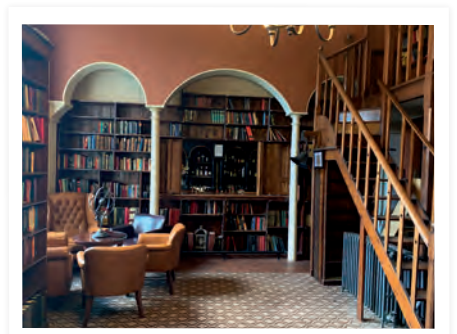
What's Next For Worcestershire Lunch

The business lunch that took place on the day was in collaboration with **Worcestershire LEP**, **University of Worcester Business School**, **Harrison Clark Rickerbys**, **ISO Quality Services Ltd** and **Ballards LLP**. This provided the opportunity to look at what's next for Worcestershire. C2S has been working closely with Worcestershire LEP on the Industrial Strategy for the county, holding many events with business leaders to look at what Worcestershire needs to continue to grow, attract the right talent, encourage investment, improve infrastructure and raise its profile in the South West and the Midlands.

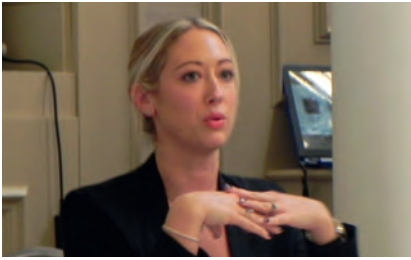
The lunch was a complete sell out, with not a seat to spare. Guests enjoyed



arrival drinks in the stunning library, a delicious 2 course lunch in the beautiful St Annes Hall and heard from our panel of experts on what they are seeing in the business community and what's next for Worcestershire.



Sponsor, Speakers & Exhibitors at the Event



Jennifer Semini – Managing Director
ISO Quality Services Ltd

Representing Family Business in Worcestershire & SME's

As the Managing Director of this award winning SME family run business consultancy Jennifer understands the challenges of running a family business in today's environment and shared her insights into the changes she has seen in the county over the last 10 years. Jennifer has experienced all the external changes and challenges that have occurred in those years and explained how ISO Quality Services Ltd have managed to stay ahead of the game. Jennifer is also a board member of the Worcestershire LEP's Business Board and Worcestershire Advanced so has a good understanding of the business landscape in Worcestershire.



Robert Capper – Head of Commercial
Team & Advanced Manufacturing,
Harrison Clark Rickerbys Solicitors

Representing the Business Community in Worcestershire, all Sectors and Size

Robert shared what Harrison Clark Rickerbys are seeing from a range of clients, across a number of sectors, on the current mood of Worcestershire businesses and people. The firm provide a full range of business and personal legal services to a wide cross section of clients across the county so have a good understanding of the business landscape. Robert's particular specialism is in commercial law so he was able to provide insights into the latest views on Brexit and the election and how they are impacting Worcestershire businesses and people and what businesses can do to protect themselves. He also provided a quick update on GDPR.



Anne-Marie McTavish – Head of the
Business School, University of Worcester

Representing The Future of Education and The Workplace

Anne-Marie, an expert in Location Independent Working and Technology Enhanced Flexible Working shared with us her findings and an update on the research on student attainment and preparation for work. As Head of the Business School and part of a four university group looking at this Ann-Marie shared her insights in to the future of education and how business can best prepare for this and how this will impact on future talent and workforce retention for Worcestershire. Having carried out research with over 3,500 students over the last 5 years, Anne-Marie knows what's important to young people today and how to help support the business community with retention on talent.



Ben Allman – Partner, Ballards Ltd

Representing the Business Community, Young Talent and Future Engagement

Ben is passionate and interested in Work/Life motivations for young professionals in Worcestershire and how businesses can accommodate them, technology that allows for flexibility in working practices and making Worcester/Hereford competitive for skilled workers, competing on the war on talent with Birmingham/London. Ben shared his findings in the business community on what is and isn't working. And how Worcestershire can best prepare for what's next in the workplace.



Gary Woodman – Chief Executive,
Worcestershire LEP

Representing the Big Picture

Gary gave an overview on the feedback from the business community that has been submitted to government in the Industrial Strategy and what will happen next. How this will positively impact on Worcestershire and when the county can expect to see the outcomes of the strategy and how that will be delivered to Worcestershire. He gave an update on the new train station, investments and other projects that are positively impacting on the county, an overview of where the county is and what's next for Worcestershire.

THE 5 MOST IMPORTANT THINGS TO STUDENTS TODAY ARE:

- 1 Stimulation and Challenge
- 2 Flexibility
- 3 The Environment and Social Responsibility
- 4 Development within their Employment
- 5 Enough Money to live on

Research Carried out by University of Worcester

Thank you to our Sponsor, Official Partners, Speakers & Exhibitors

Big thank you to our Sponsor, Official Partners, Speakers and Exhibitors.

ISO Quality Services Ltd, HR Champions, Brace Creative Agency, Worcestershire LEP, HCR Law, Ballards LLP, University of Worcester, Borwell, Zentano, Stilo, Beaufort Financial, Cotswold Smiley Booth, Motor Republic, HUSSINGTREE GIN, Bank House Hotel, Statcom Telecoms, GMS Group, Contour, Haines Watts, My Power, 26 Steps, Hewett Recruitment, Quantum Tax, Tewkesbury Printing, HOW College, Utility Helpline, Hillside Brewery & Events, IDR Consultants, Stanbrook Abbey, Smart Thinking and Protrack Solutions.

